

# Eurosafe 60

EN

Cleans, disinfects  
and dries safely



**Euronda**<sup>®</sup>  
Pro System

# Eurosafe 60

Cleans, disinfects  
and dries safely



Eurosafe 60 pre-washes, washes, and dries in a single cycle, eliminating the need for manual cleaning thereby ensuring more effective and efficient results in less time and less risk for the operator. The large, 60-litre tank can thermally disinfect wands, loose instruments and containers, allowing for a better use of space thanks to its numerous accessories. Thanks to its user-friendly interface, up to 40 cycles can be programmed and customised by a variety of settings, according to requirements and the equipment being treated, which include washing time and temperature. Eurosafe 60 ensures full and safe traceability: validating and recording all the thermal disinfection cycles operated, saving all data on a USB stick for later transfer to a PC.



### **Traceability**

The disinfection process is validated and recorded using a USB stick, Ethernet connection, and external printer.



### **All in one**

Eurosafe 60 pre-washes, washes, rinses, thermally disinfects and dries in a single cycle, for more effective results in less time.



### **Performance**

The large tank, an injection cleaning system and a propelled-air drying system, ensures a faster and more complete cleaning process.



### **User-Friendly**

Up to 40 cycles can be programmed and customised thanks to the user-friendly LCD interface.

Eurosafe 60 saves all the information on all the disinfection cycles on a USB stick for later transfer to a computer by an Ethernet connection (available on request) or the data can be instantly accessed by using the optional thermal printer.



# Traceability

## Full and safe control of the procedures



### Pro System Connectivity

Eurosafe 60 is even more efficient if connected to other Euronda devices. This allows for complete traceability ensuring quality and safe sterilisation process.



### Management software for cycle traceability

At the end of each cycle the thermal disinfection device generates a file which records all the data on the process, validating the load if the recorded temperatures are compliant. This file can then be read by the management software, thereby all the processes occurring in the sterilisation room can be monitored.



### Multi-user management

The disinfection process can be managed by several operators (upto 30) with authorised password access. This ensures that every operation is validated, documented operator-linked.



Multi-user management

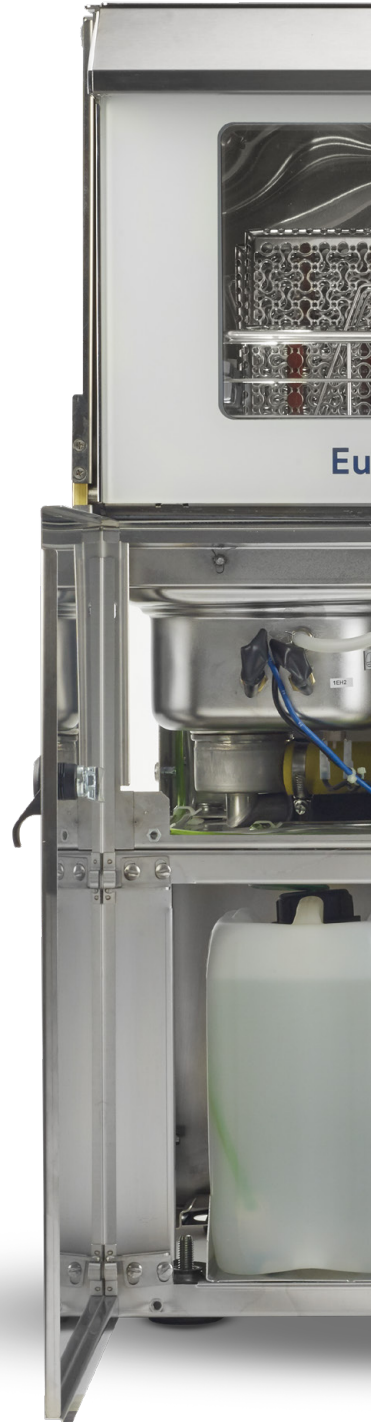
# All in one

The entire cleaning process is automated in one single device

In a single cycle, Eurosafe 60 pre-washes, washes, thermally disinfects and dries, so there is no need for manual cleaning. With less time and less effort, Eurosafe 60 ensures effective and efficient results, eliminating the risk to operators when handling contaminated instruments. Thanks to its reduced water and energy consumption, and automatic detergent-control system that prevents waste, it is environmentally friendly.



Liquid dosage system





## + Maximum operator safety

Eurosafe 60 has been wholly designed to ensure maximum safety, from its baskets and washing chamber in AISI 316L steel with rounded edges, to its safety system preventing the door from being opened during wash.

## + Spacious

The large washing chamber and various accessories, trays, baskets and supports for handpieces provide plenty of room for loads: you can thermosanitize a load equivalent to that of 2 24-Litre autoclaves with a single wash cycle.

## + Reduced consumption

Eurosafe 60 has been designed to be totally eco-friendly. Electricity and water consumption have been optimised: 1.7 KW and 12 litres of water for every short cycle.

## + Automatic detergent dispenser

Euroclean 120 and Eurobright 360 detergents are directly injected into the washing chamber by a peristaltic pump controlled by the system. The thermal disinfection autonomously dispenses the correct amount of product thereby reducing waste.

Thanks to its spacious 60 L tank, Eurosafe 60 can disinfect wands, loose instruments and containers. Its injection washing system allows water to flow into more areas optimising cleanliness. The propelled hot air drying system fully eliminates water deposits both inside and outside the instrument body.





# Performance

## Disinfects everything, without any problems



### **Efficient washing and thermal disinfection**

During the wash phase a powerful pump produces strong and continuous multi-direction water flow. The device can be adjusted up to a temperature of 93° C effectively disinfecting the instruments.



### **Above standard**

The A0 value determines the ability of a thermal disinfection cycle to inactivate micro-organisms. The EN 15883 standard requires a minimum A0 value of 600 for each disinfection cycle and, at the same time, that the thermodisinfector is capable of reaching an A0 value of no less than 3000. Eurosafe 60 is able to reach an A0 well above the norm. Furthermore, you can modify the A0 parameter as required and monitor it in real time.



### **Forced-air drying**

All the thermal disinfection cycles end with a drying phase: a powerful blower, combined with a resistance, injects hot air into the wash chamber from several points to ensure the load is perfectly dry. The hot-air drying system completely eliminates the water deposits both in the external and internal parts of the instrument body. A HEPA filter is optional for absolute safety.



### **Standard water softener**

Water contains a number of minerals and substances that can hinder washing efficiency and deteriorate treated instruments. Using good-quality water is essential to prevent deposits forming on instruments and to ensure that they last. The integrated water softener prevents limescale and other impurities from building up inside the washing chamber and on surgical instruments, ensuring efficient cleaning at all times.

Eurosafe 60 makes thermal disinfection easy and pleasant thanks to its user-friendly LCD display control panel interface which is really easy to use. Three preferred cycles can be set on the buttons that are easy to select located just below the display screen, or there is a choice of 17 other pre-defined settings.



# User-friendly

## Rapid, simple and customisable



### Easy to use

Following the Euronda philosophy of easy-to-use devices, the Eurosafe 60 control panel provides an easy and rapid access interface.



### Customisable

The thermodisinfecter has 20 pre-set cycles with various phases that best fit with wash requirements. In addition, there is the option to set and save 20 other customisable cycles. Creating and changing these cycles is through a password-protection setting.



### Inspectionability

The clear tempered double-glass door allows for easy monitoring of the contents during a cycle. Thus, any blockages due to the incorrect positioning of the instruments internally can be detected ensuring that operations are always supervised.



Transparent door

# Accessories

A wide range of accessories to comply with all the requirements and to optimise the use of space and power of the thermodisinfectors. The supports available allow compliance with specific injection washing and disinfection requirements of the instrument cavities. Furthermore, these accessories will allow the external washing and a delicate and accurate washing of the internal cores of the air and water-spray ducts as well as the duct waste channels through the forced elimination of the wash solution.

## Starter kit included



### Products:

- 1x Handbook
- 1x USB key
- 1x Water Test
- 1 Kg salt
- 1x Euroclean (500ml)
- 1x Eurobright (500ml)



**Standard load basket**



**Insert for 8 trays (40 mm slots)**



**Insert for vertically positioned instruments**



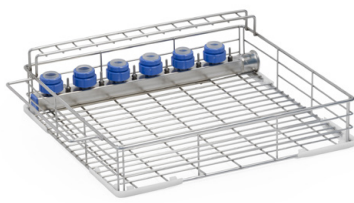
**Basket for burs and small parts**

# Optional Baskets

For further optional baskets, request information to the customer service



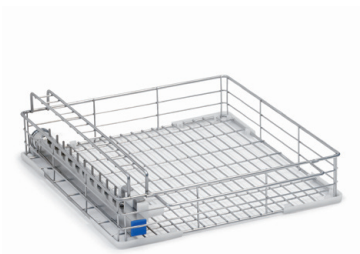
**Load basket with 4 wand holders, 5 injectors for hollow items and 2 connections for aspiration tubes**



**Load basket with 6 wand holders and 6 injectors for hollow items**



**Load basket with 8 wand holders**



**Load basket with 11 injectors for hollow items and 2 connections for aspiration tubes**



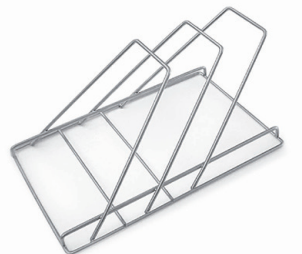
**Net basket DIN 1/1 for rigid instruments**



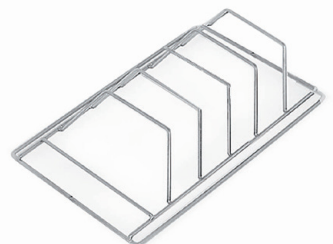
**Net basket DIN 1/1**



**Net basket DIN 1/2**



**Insert for 2 instrument containers or trays (50 mm slots)**



**Insert for 4 instrument containers (35 mm slots)**

# Accessories



## External thermal paper printer

External labels printer: safely tag your load. Save space and conveniently print your labels and bar codes.



## Datalogger

It transfers registered data from the thermo-desinfector to the PC, for a complete and guaranteed data traceability.



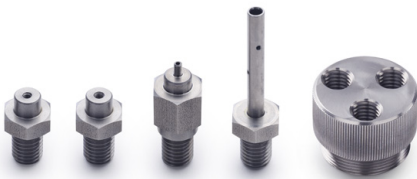
## Euroclean 120

Enzymatic detergent for mechanic washing of medical devices.



## Eurobright 360

Rinsing liquid, lubricant for medical equipment and devices in the washing machine.



## Adapters

- female thread M3 x 0.5
- female thread M3.5 x 0.6
- male thread M3 x 0.5
- injector
- holder

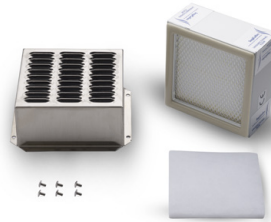


## Supports for handpieces

- stainless steel filter
- top for closure
- seal diameter 19-21
- seal diameter 14-17



**Turbine adaptor**



**HEPA air filter**



**Funnel for loading salt**



**Demineralized water connection kit**



**EasyAdapters**

The EasyAdapters are built in solid aluminium, with a distinctive colour and a laser incision for immediate identification.

- Easy Adapter KaVo
- Easy Adapter NSK PLT
- Easy Adapter NSK QD
- Easy Adapter Bien Air
- Easy Adapter W&H
- Easy Adapter Sirona

\*All brands mentioned are registered and owned by the producers.

# Thermal disinfection cycles

	Short	Standard	Intensive
	P1	P2	P3
<b>Total cycle time</b>	45'	60'	75'
<b>Pre-wash</b>	-	✓	✓
<b>Washing</b>	50°C	60°C	65°C
<b>Rinsing</b>	-	✓	✓
<b>Thermal disinfection</b>	90°C	90°C	90°C
<b>Drying</b>	120°C	120°C	120°C
<b>Consumption</b>	12 L - 1,7 kW	18 L - 1,8 kW	24 L -1,9 kW

## Operating stages



### Pre-wash

The cold water used in the pre-wash stage is demineralized in a filtering process involving self-healing active resins and common salt.



### Washing

In the washing stage, a powerful pump produces multi-direction water jets at constant pressure. Together with the quality of the AISI 316L stainless steel washing chamber, washing arms, filters and internal circuit, the system guarantees exceptional washing results.



### Rinsing

In the rinsing stage, the detergent is removed from the load. Thermal disinfection the thermal disinfection stage can be programmed to last between 1 and 10 minutes and the temperature can be set at up to 93°C. The temperature is controlled by two independent pt1000 sensors.



### Thermal disinfection

The thermal disinfection stage can be programmed to last between 1 and 10 minutes and the temperature can be set at up to 93°C. The temperature is controlled by two independent pt1000 sensors.



### Drying

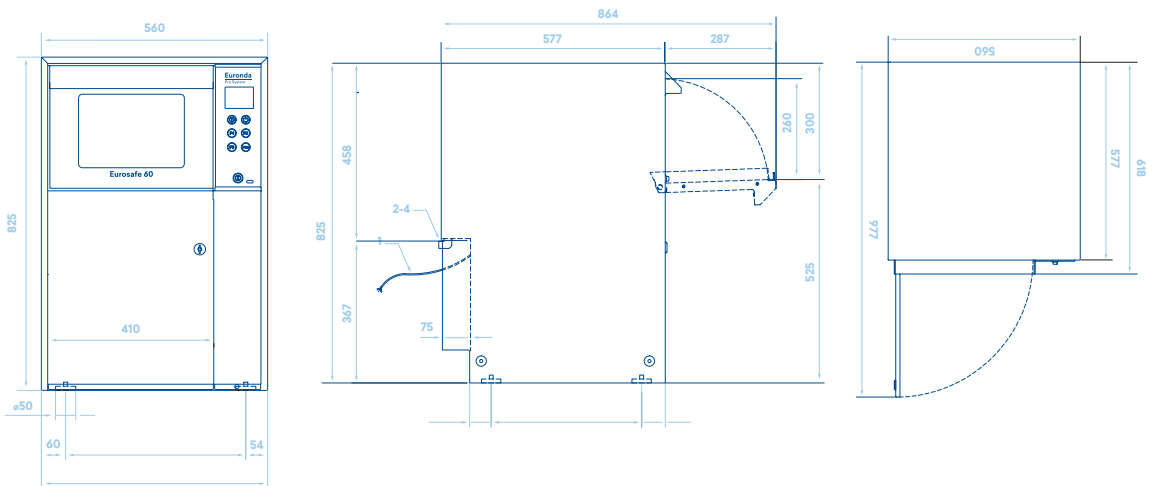
Effective distribution of the filtered, forced hot air in the chamber ensures that all of the instruments and hollow items are dried perfectly.



# Technical features

<b>Overall dimensions</b>	560 x 825 x 577 mm (wxhxd)
<b>Weight</b> (machine empty with basket and trays)	62 kg
<b>Power supply</b>	230V/~ /50Hz
<b>Total power</b>	2750 W
<b>Pump power</b>	150 W
<b>Noise level</b>	< 70 dB(A)
<b>Operating temperature</b>	+5°C / +40°C
<b>Fan capacity</b>	up to 100 m <sup>3</sup> /h
<b>Power of heating elements for drying</b>	750 W

## Overall required space (mm)



## Safety devices

- Short-circuit protection
- Overheating protection
- Accidental door opening protection
- Process validation system

## Compliance with harmonized standards

- 93/42/EEC, as amended (Medical Device Directive)
- 2006/95/EC (Low Voltage Directive)
- 2004/108/EC (Electromagnetic Compatibility Directive)
- CEI EN 61010-1 (Safety)
- CEI EN 61010-2-040 (Safety)
- 2011/65/EU (RoHS II)

## Documentation

- Installation and user manual
- Warranty certificate
- Installation chart

## Certifications

- ISO 14971 (Risk Management for Medical Devices)
- IEC 61326-1 (Electromagnetic compatibility)
- ISO 15883-1 (Washing performance)
- ISO 15883-2 (Washing performance)
- ISO/TS 15883-5 (Washing performance)
- CE Type Ref: EUROSAFE 60 – EUROSAFE 60 D

**Euronda Spa**

Via Chizzalunga 1  
36066 Sandrigo  
Vicenza, Italy  
**t** (+39) 0444 656111  
**f** (+39) 0444 656199  
**m** info@euronda.com  
**www.euronda.com**

**Deutschland**

Euronda Deutschland  
Am Landwehrbach 5  
48341 Altenberge, Deutschland  
**t** (+49) 2505 9389 0  
**f** (+49) 2505 9389 29  
**m** info@euronda.de  
**www.euronda.de**

**France**

Euronda France Eurl  
ZAC les Vallées, Avenue de Bruxelles  
60110 Amblainville, France  
**t** + 33 (0) 3 44 06 69 70  
**f** + 33 (0) 3 44 02 03 89  
**m** info@euronda.fr  
**www.euronda.fr**

**España**

Euronda - Identyd  
Identyd, Calle Músico  
Antonio Rodríguez de Hita, 12  
Bajo 30007 Murcia  
**t** 900102034  
**m** info@euronda.es  
**www.euronda.es**

**Russia**

OOO Euronda Russia  
193149 Leningradsakaya obl.,  
Vsevolozhsky r-on,  
d. Novosaratovka, ul.  
Pokrovskaya, dom 41, litera B.  
Russia  
**t** + 7 (812) 635 88 94  
**m** info@eurondarussia.com  
**www.euronda.com.ru**

# Euronda®

Distributed by:

# ICONA

DESIGNED WITH YOU IN MIND

Trade Central Business Park  
Unit 1237 Kellor Park Drive  
Kellor Park Vic 3042

Ph: 1300 442 662  
sales@icona.net.au  
www.icona.net.au