

Airel PE9

The Universal Left/Right (ambidextrous) Chair



Airel PE9

The PE9 equipment has been designed to adapt to all working positions, right or left, two to four hands.

The PE9 is the ambidextrous wheelchair par excellence. Its ergonomic design and its functionalities make it a complete universal unit.

- Ambidextrous instrumentation with integrated display
- Full left/right configuration
- Ambidextrous assistant instrumentation
- Triple articulating headrest
- Ultra comfort upholstery with enlarged backrest
- Trendelenburg position



Chair positions:

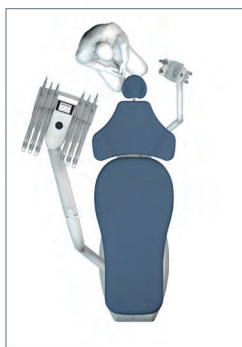
The PE9 armchair has been designed to adapt to all body types. Ultra-comfortable and with an enlarged backrest, it can be programmed for up to 5 positions, from very low patient entry to compensated elongation of the backrest without elongation of the body from the lying position without “undressing” effect.

The Trendelenburg movement, combined with the tilting of the backrest, ensures patient comfort during the longest treatments.

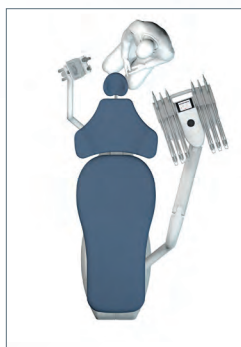
The very thin thickness of the backrest allows the practitioner to place his legs underneath to maintain an ergonomic working position whatever the treatment.

Airel PE9

CONFIGURATIONS



*Unit on the right
and access by the
left (right-handed
position)*



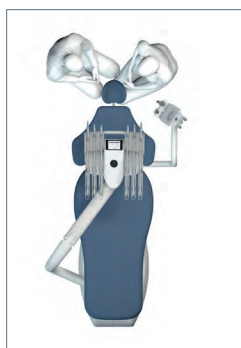
*Unit on the left
and access by
the right
(left-handed)*



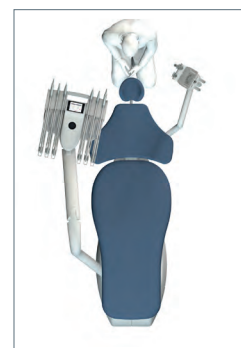
*Unit on the right
and access by
the left
(left-handed)*



*Unit on the left
and access by
the right
(right-handed
position)*



*4 hands work
(right-handed or
left-handed
position)*



*Work at 12
o'clock (right-
handed or left-
handed position)*

PNEUMATIC HEADREST

Side and Rotating Movement



The **triple articulation headrest** fits all patient head positions to optimise their comfort as much as possible. A single button regulates side movement, rotation and vertical slide, with pneumatically assisted movements. It can also be positioned for children (pediatric dentist).

Airel PE9

A Suitable Workspace

To be universal, the PE9 chair is equipped with units with ambidextrous fixation and adapts to all the working positions of practitioners and to all spaces so that entry from the left can be proposed.

With whip arms or hanging cords, wall-mounted, ceiling-mounted or mobile, all options can be chosen so that the work environment adapts to the practitioner and not the other way around.



Ambidextrous over the Patient Delivery

Perfectly ambidextrous and attached to the foot of the chair, this very flexible over the patient delivery can be equipped with up to 6 instruments.

Ceiling delivery system

In the transthoracic and ambidextrous position, the over the patient delivery unit can also be fixed to the ceiling to completely clear the patient's entrance and provide unobstructed access around the chair.



Airel PE9

Traditional Delivery System

Perfectly ambidextrous and fixed to the foot of the chair, this delivery system can accommodate up to 6 tilting instruments and equipped with a removable guide.



Under-bench/Wall Mount Delivery System

Wall-mounted on a balanced arm, the unit retains all its functionality and can be stored under-bench to free up the patient treatment area.



Mobile Delivery System

With traditional delivery (hanging tubes) the mobile cart can be connected to the armchair or can be connected to external services and configured to your needs.



Airel PE9

INSTRUMENT LAYOUTS



Over the Patient Central

This delivery unit accommodates 2 to 6 instruments. Whatever its position, each instrument is easy to hold and reposition. Combined with a long cord, the balancers offer flexibility and maximum lateral amplitude. Touch screen panel is located in a central position.



Over the Patient Side

This delivery accommodates 2 to 5 instruments. Whatever its position, each instrument is easy to hold and reposition. Combined with a long cord, the balancers offer flexibility and maximum lateral amplitude. The touch panel is located on one side with the handpiece decontamination well on the other.



Traditional Delivery

Modular from 2 to 6 instruments, this delivery offers a variable inclination of the instruments which facilitates their handling whatever their position. The use of the instrument is flexible, with or without a guide, all you have to do is choose which one suits.



Traditional side delivery

Modular from 2 to 5 instruments, this delivery offers a variable inclination of the instruments which facilitates their handling. The use of the instrument is flexible, with or without a guide, you just have to choose!

Airel PE9

CONTROL SCREENS



PE9 VERSION EVO.2

Already boasting a complete basic configuration, PE9 is further improved by a 7 inches tactile High-def. colour screen.

This touch screen tool turns the PE9 concept into a high tech optimum work station.

With memorization of programs by patient and by type of care and upgradable technology (Wave One, Camera, Scaler, Curing Light etc.

This entirely waterproof intuitive tool is all about hygiene, making it unbelievably long-lasting. All unit functions are displayed on the tactile screen for each selected instrument including the intra oral camera.



NEO.2 DISPLAY

Backlit, monochrome touch screen with storage by USB key of the different individual settings for each practitioner to facilitate transfer to another chair.



SCREEN ONE

Polycarbonate screen for adjusting chair positions, instruments, assistant call, door opening and other functions.



USB Memory Stick

The programs of each practitioner are saved on a USB stick. These programs cover not only the positions of the chair but also the programming of the function of each instrument depending on which treatment is to be provided.

Airel PE9

INTEGRATED IGN SYSTEM



IGN EVO

The single control progressive pedal allows to activate the Chip Air, Chip Water, and the activation of the sprays. Wireless with great manoeuvrability and hygiene, it also includes chair movement controls and different programming. The IGN Evo is a fully automated spray water decontamination system connected to mains water. In an external box, it can be used on 5 devices simultaneously.



IGN Magazine

The Calbenium dispenser for the the IGN Evo is a fully automated spray water decontamination system connected to mains water and installed inside the chair or externally.



IGN Cartridge

Combined with the IGN system and the CALBENIUM product, the IGN CARTRIDGE has been designed to continuously filter water from dental unit sprays.

OPERATING LIGHT

Fixed to the ceiling, to the chair or in a wall position, the GCOMM Polaris is



available as a standard operating light or be supplied with integrated 4K camera enabling streaming.

SPITOON/CUSPIDOR

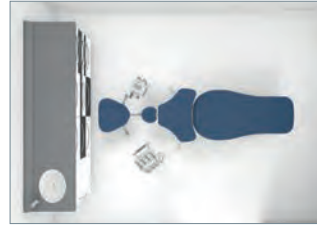
The cuspidor is adjustable and fixed to the chair to facilitate patient access. The



Cuspiclean water decontamination system and the removable and autoclavable bowl ensure additional hygiene.

Airel PE9

ORTHODONTICS



The compact support associates a suction cannula and suitable dynamic instruments. The handiness of the articulated arm mounted double tray attached to the chair is specially suited to orthodontics.



Airel PE9

OPTIONS



Foot Control - Wired or Wireless

The single control progressive pedal allows to activate the Chip Air, Chip Water, and the activation of the sprays. Wireless option has great autonomy for perfect maneuverability and hygiene and also includes chair movement controls and different programming. The progressive pedal exists in a "crushing" or "lateral" version.



Child Cushion

To make caring for the little ones easier, the child cushion allows them to be raised to the correct headrest height during treatment.

STOOLS

Assist Seat



Assistant's seat with customizable upholstery. It allows a seated position, the use of the backrest as an armrest and incorporates a footrest.

Harley Seat



Operator seat with customizable upholstery. Allows an ergonomic position, excellent inclination of the legs and good back support. Increases support surface of the buttocks by 20% by extending it to the thighs, greatly improving comfort.

Airel PE9

COLOUR RANGE AND FINISHING

Airel has chosen a **broad range of colours and textures** for its upholstery. They are **resilient and original**, and ensure you will find a match for the colours of your practice.



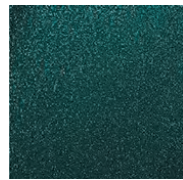
Laurel
554 4443



Apfel
107 5041



Aspen Green
363 7273



Pétrole
Pailleté 4140



Spice
322 8208



Scarlet
0017



Red
291 1176



Blood Orange
363 1396



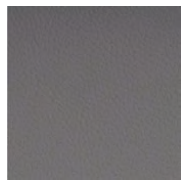
Glacier
550 2638



White Satin
322 6541



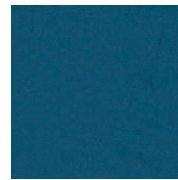
Platinum
550 5744



Ceramic
0022



Battle Ship
363 5011



Blueberry
554 2711



Scuba
0018



Capri
554 2522



Baltic
29102551



Bleuet
01045014



Orange
107 6019



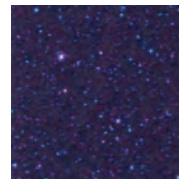
Framboise
0104 5002



Sorbet
291 6580



Rouge Pailleté
2526



Bleu Pailleté
2525



Améthyste
107 7001



Chrome
0023



Raven Wing
291 5607



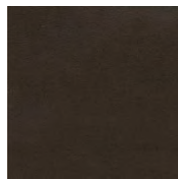
Gris Pailleté
2523



Noir Pailleté
3073



Noir
01045011



Cave
291 3523

Airel PE9



Distributed by:

ICONA

Trade Central Business Park
Unit 12/37 Keilor Park Drive
Keilor Park Vic 3042

Ph: 1300 442 662
sales@icona.net.au
www.icona.net.au